



1 Kingwood House, London
E1

GARTON JONES.COM



1 Kingwood House, London , E1

GARTON JONES.COM

11 Park Street
Chelsea Creek
London
SW6 2FS

Sales +44 (0) 20 7824 7090
paul@gartonjones.com
www.gartonjones.com

£851 Per Week

A modern one-bedroom apartment 692sqft (64sqm) located in the heart of the highly desirable development Goodman's Field in the heart of Aldgate. This property comprises a spacious open plan lounge & kitchen, leading to a balcony, double bedroom & bathroom. Goodman's field offers 24-hour concierge service, business reception room, screening room, gym, swimming pool, spa, sauna room, landscaped green space and outdoor public space. The location offers several shops, supermarkets, restaurants, and cafes also Brick Lane Market and Columbia Flower Market. Transport links include Aldgate East 0.2, Aldgate station 0.3 and Tower Gateway 0.4m.

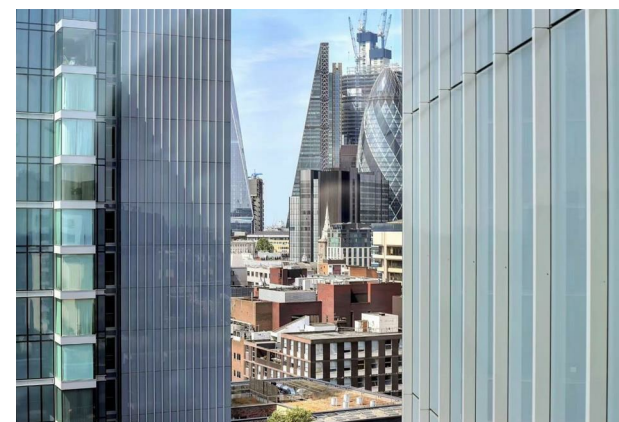
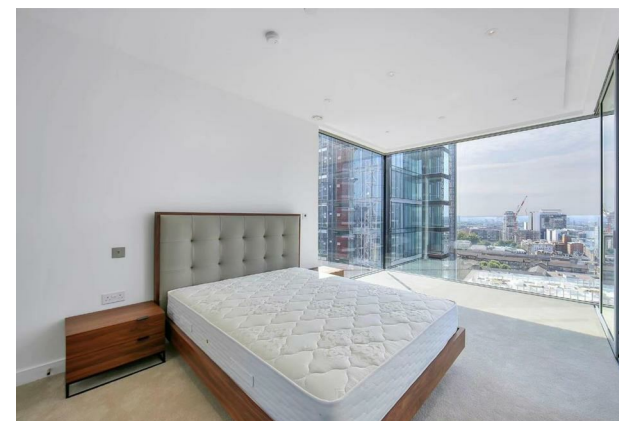
****Please note the furniture may differ or not be included to that shown in the current photos****

5 Weeks Security Deposit
12 Month Tenancy
Council Tax — Tower Hamlets, Band E

EPC — B (84)

EPC certificate available on request.

- One Bedroom Apartment
- 15th Floor
- 692sqft (64sqm)
- Furnished
- Highly Desirable Goodman's Field Development
- 24 Hour Concierge
- Premium Residents facilities — Including 24-hour concierge service, business reception room, screening room, gym, swimming pool, spa, sauna room
- Swimming Pool, Spa, Sauna Room
- 0.2 Aldgate East, 0.3 Aldgate & Tower Gateway 0.4m.
- EPC — B (84)





<i>Apt. 1203, 1303, 1403 & 1503</i>		
	64.3 sq.m	692 sq.ft
Apartment Area	55 sq.m	592 sq.ft
Balcony Area	9.3 sq.m	100 sq.ft
Living Room/Dining	3.78m x 2.82m	125" x 93"
Kitchen	3.78m x 2.82m	125" x 93"
Bedroom	3.93m x 3.55m	12'11" x 11'8"

